



İSTANBUL TEKNİK ÜNİVERSİTESİ

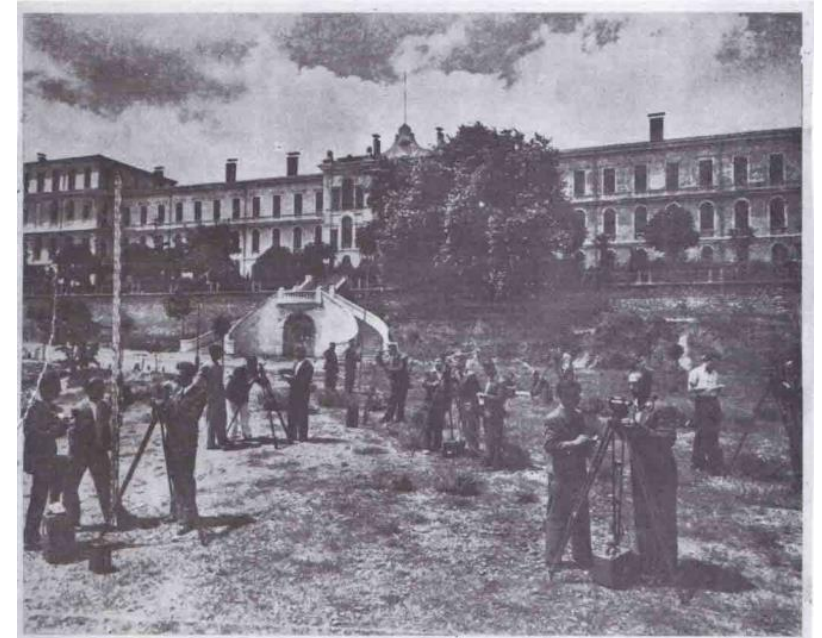
Electrical & Electronics Engineering Faculty
Electrical Engineering Department

Orientation for 1st year Students
Asst. Prof. Dr. Lale Erdem Atılgan



- In 1934, the “Institute of Mechanical and Electrical Engineering” became a part of the “Yüksek Mühendis Mektebi” (Master of Engineering College), today’s Istanbul Technical University, as the Electro-Mechanic Division, which was the official start of the Department of Electrical Engineering.
- 2020 is the 86th anniversary of our Faculty.

- Our faculty has a well-deserved reputation for pioneering achievements in the past as well as training highly qualified engineers and scientists. Significant and pioneering studies of our faculty are:
 - Electrification of the whole country
 - The first high voltage laboratory
 - The first television broadcasting
 - The first stereo radio
 - The first microelectronics laboratory and microchip production



Faculty of Electrical and Electronics Engineering



- Today, the foundation of electrical, electro-mechanical and electronic industries in Turkey is based on and developed through the valuable contributions of our Faculty.
- Besides its contributions in industrial areas, our Faculty had a leading role in the developments of the Departments of Electrical Engineering at METU and Boğaziçi University which are leading high education institutions in Turkey.
- In this regard, our Faculty has been included in every industry in the field of Electrical and Electronics Engineering in Turkey and it is considered as one of the most important institutions of our university and our country.



Academic Departments



Electrical Engineering

- Electrical Engineering covers energy development & power generation, power transmission & distribution networks, lighting technologies, electrical machines & power electronics.
- Electrical engineering also forms a multi-disciplinary application platform with the intersection of mechanical, electronics, computer and communications engineering.
- This platform leads to the design, installation, monitoring, control, protecting and managing the modern age electrical power systems.

Electronics and Communication Engineering

- The aim of the undergraduate program of the Electronics and Communication Engineering (ECE) Department is to provide the students with a solid scientific and technical background, and research capabilities in the design, development, and manufacturing of electronic devices and systems.

Control and Automation Engineering

- Control and automation engineering is an engineering branch which ensures electronics, mechanics and computer based all industrial production systems work together as desired way; also produces and applies information and technologies.
- The program focuses on automatic control theory and its applications, industrial automation, measurement and instrumentation, robotics, computer based industrial information systems design and applications.

Graduate Programs



- Electrical Engineering
 - Electrical Engineering
- Electronics and Communication Engineering
 - Electronics Engineering
 - Telecommunications Engineering
 - Biomedical Engineering (MSc Program)
- Control and Automation Engineering
 - Control and Automation Engineering
- Interdisciplinary Graduate Programs in collaboration with other departments
 - Satellite Communication and Remote Sensing
 - Mechatronics Engineering
 - Railways Systems Engineering (MSc Program)

Accreditation & International Education



Engineering
Accreditation
Commission

- 2005 - 2011
 - All programs of the faculty
- 2011 – 2017
 - Electrical Engineering
 - Control and Automation Engineering
- 2017-2022
 - All programs of the faculty



Erasmus+

Numbers for the Electrical Engineering Department

Academic Year	Incoming	Outgoing
2011-2012	7	6
2012-2013	4	9
2013-2014	8	7
2014-2015	4	8
2015-2016	3	6
2016-2017	2	8

<http://www.erasmus.itu.edu.tr/anasayfa>

Academic & Administrative Staff



Electrical Engineering Department

- 13 Professors
- 4 Associate Professors
- 9 Assistant Professors
- 2 Instructors
- 4 PhDs
- 21 Research & Teaching Assistants
- 2 Engineers (1 PhD)
- 2 Technicians

Administrators

Head of the Department



Prof. Dr. Serhat ŞEKER
sekers@itu.edu.tr
Tel: +90 212 285 6019
Room: 6308

Deputy Head of the Department



Dr. Öğr. Üy. Salih Barış ÖZTÜRK
ozturksb@itu.edu.tr
Tel: +90 (212) 285 6748
Room:

Deputy Head of the Department



Asst. Prof. Suat İLHAN
ilhansu@itu.edu.tr
Tel: +90 212 285 6780
Room: 6320

Website – www.elk.itu.edu.tr



DEPARTMENT of
ELECTRICAL
ENGINEERING

[GLOBAL İTÜ](#) [NİNOVA](#) [REGISTRAR'S OFFICE](#) [WEBMAIL](#) [LIBRARY](#) [DIRECTORY](#) [TÜRKÇE](#)

[HOMEPAGE](#) [ABOUT US](#) [ACADEMIC](#) [STAFF](#) [RESEARCH](#) [ACCREDITATION](#) [ALUMNI](#) [CONTACT](#)



Electrical Engineering Program



- The mission of Electrical Engineering at ITU is to:
 - Provide a broad education in the fundamentals of electrical engineering and technology, while providing opportunities for emphasis in the specialized fields of electrical power engineering,
 - Pursue research to advance the state-of-art in electrical engineering and engineering education,
 - Have graduates who accept responsibility as an engineer in state, private and world-wide industrial organizations, or to pursue advanced degrees after graduation.
- The vision statement of Electrical Engineering at ITU is:
 - To be a well-known establishment in the field of Smart Grid.

English Education & Graduation



- The Electrical Engineering Program offers two different options, 30 % English or 100 % English.
- For the 30 % English program, the education language at Istanbul Technical University is carried out in both English and Turkish where the students must take at least 30% of their total credit hours from courses offered in English.
- As the program offers almost all courses in English as well, the students may choose to complete all credits in English.
- For the 100 % English Program, all courses in the Program must be completed in English.
- In order to graduate, the student must successfully complete all credits in the Electrical Engineering Program.
- The student must at the same time fulfill an overall GPA of 2.00 and successfully complete the necessary internship periods.

Curriculum – Distribution of Total Credit Hours



	Total credits	Distribution (%)
Total	157.5	100
Mathematics and Basic Sciences	33	21.6
Basic Engineering	33	21.6
Engineering Design	61	39.8
Humanitarian and Social Sciences	26	17.0

Freshman Year



1. Semester

Course Code	Course Title	Credit	Theoretical	Tutorial	Lab.	ECTS	Type	Compulsory/Elective	Semester
FIZ 101E	Physics I	3	3	0	0	4.5	-	C	1
FIZ 101EL	Physics I Laboratory	1	0	0	2	1.5	-	C	1
KIM 101E	General Chemistry I	3	3	0	0	4.5	-	C	1
MAT 281E	Linear Algebra and Applications	3	3	0	0	4	-	C	1
MAT 103E	Mathematics I	4	3	2	0	6	-	C	1
TUR 101	Turkish I	2	2	0	0	2	-	C	1
ELK 111E	Electrical Engineering and Ethics	2	2	0	0	4.5	-	C	1
KIM 101EL	General Chemistry I Laboratory	1	0	0	2	1.5	-	C	1
DAN 101	Academic Advising	1	0	2	0	1	-	C	1

2. Semester

Course Code	Course Title	Credit	Theoretical	Tutorial	Lab.	ECTS	Type	Compulsory/Elective	Semester
FIZ 102E	Physics II	3	3	0	0	4.5	-	C	2
FIZ 102EL	Physics II Laboratory	1	0	0	2	1.5	-	C	2
TUR 102	Turkish II	2	2	0	0	2	-	C	2
MAT 104E	Mathematics II	4	3	2	0	6.5	-	C	2
BIL 110E	Introduction to Program Language (C)	2	1	0	2	4.5	-	C	2
ING 112	English I	3	3	0	0	3.5	-	C	2
	2nd Semester Elective Courses	3				4/5/6	-	E	2

2nd Semester Elective Courses



Course Code	Course Title	Credit	Theoretical	Tutorial	Lab.	ECTS
BIO 301E	Fundamentals of Biology	3	3	0	0	5
BIO 302E	Fundamentals of Biotechnology	3	3	0	0	5
BLG 112E	Discrete Mathematics	3	3	0	0	5
FIZ 201E	Modern Physics	3	3	0	0	6
KIM 202E	Physical Chemistry	3	3	0	0	4
KIM 203E	Analytical Chemistry	3	3	0	0	4
KIM 205E	Organic Chemistry	3	3	0	0	4
KIM 207E	Inorganic Chemistry	3	3	0	0	5
MAT 202E	Numerical Methods	3	3	0	0	5

Sophomore Year



3. Semester

Course Code	Course Title	Credit	Theoretical	Tutorial	Lab.	ECTS	Type	Compulsory/Elective	Semester
MAT 210	Engineering Mathematics	4	4	0	0	6	BS	C	3
EHB 211	Basics of Electrical Circuits	3	3	0	0	4.5	BE	C	3
MAL 201	Materials Science	3	3	0	0	5	BE	C	3
MAT 271E	Probability and Statistics	3	3	0	0	5	BS	C	3
ELK 207E	Int to Sci.and Eng.Comp. (Python)	2.5	1	0	2	4.5	BE	C	3
	3rd Semester Elective Courses	3				4	GE	E	3

4. Semester

Course Code	Course Title	Credit	Theoretical	Tutorial	Lab.	ECTS	Type	Compulsory/Elective	Semester
EHB 232	Circuit and System Analysis	3	3	0	0	4.5	BE	C	4
EHB 212	Introduction to Electromagnetic Fields	3	3	0	0	4	BE	C	4
ING 203	English III	3	3	0	0	-	GE	C	4
EHB 252E	Signals and Systems	3	3	0	0	4	BE	C	4
BLG 231	Digital Circuits	3	3	0	0	4.5	BE	C	4
EHB 222	Introduction to Electronics	3	3	0	0	4.5	BE	C	4
	4th Semester Elective Courses	3				4/4.5/5/6	BE	E	4

3rd Semester Elective Courses



Course Code	Course Title	Credit	Theoretical	Tutorial	Lab.	ECTS
SNT 102E	Photography	3	3	0	0	4
SNT 103E	Drawing	3	3	0	0	4
SNT 104E	Mythology and Art	3	3	0	0	4
SNT 105E	Film Art	3	3	0	0	4
SNT 106E	Traditional Turkish Art&Crafts	3	3	0	0	4
SNT 107E	Ancient Civilizations in Anatolia	3	3	0	0	4
SNT 112E	Theater	3	3	0	0	4
SNT 113E	Art and Interpretation	3	3	0	0	4
SNT 114E	Contemporary Art	3	3	0	0	4
SNT 116E	The Art of Communication	3	3	0	0	4
SNT 117E	Jazz Appreciation	3	3	0	0	4
SNT 121E	World Music Cultures	3	3	0	0	4
SNT 123E	Film Production	3	3	0	0	4
SNT 211E	Istanbul:History ,Art and Society	3	3	0	0	4
SNT 212E	Art,Culture and Society	3	3	0	0	4
SNT 215E	Balkan Musics	3	3	0	0	4
SNT 226E	Philosophy of Art	3	3	0	0	4
SNT 227E	Sound and Society	3	3	0	0	4

4th Semester Elective Courses



Course Code	Course Title	Credit	Theoretical	Tutorial	Lab.	ECTS
DNK 201E	Dynamics	3	3	0	0	5
ELK 234E	Thermodynamics and Hydrodynamics	3	3	0	0	6
ELK 364E	Fundamentals of Superconductivity	3	3	0	0	5
KON 224E	Measurement and Instrumentation	3	3	0	0	4
STA 204E	Statics and Strength of Materials	3	3	0	0	4.5

Junior Year



5. Semester

Course Code	Course Title	Credit	Theoretical	Tutorial	Lab.	ECTS	Type	Compulsory/Elective	Semester
ELK 371E	Illumination Tecnique	2.5	2	1	0	4	-	C	5
ELK 343E	Electromechanical Energy Conversion	3	3	0	0	5	-	C	5
ELK 331E	Power Electronic Circuits	3	3	0	0	5	-	C	5
ELK 361E	Engineering Drawing and Design	1.5	1	1	0	3	-	C	5
KON 317E	Control Systems	3	3	0	0	5	-	C	5
ATA 101	History of Turkish Revolution I	2	2	0	0	2	-	C	5
	5th Sems.Elect. Course (MT)	3				5/6	-	E	5

6. Semester

Course Code	Course Title	Credit	Theoretical	Tutorial	Lab.	ECTS	Type	Compulsory/Elective	Semester
EKO 201E	Economics	3	3	0	0	4	-	C	6
ELK 356E	Electrical Machines	3	3	0	0	5	-	C	6
ELK 342E	Power Electronics Laboratory	1	0	0	2	3	-	C	6
ELK 322E	Power Transmission Systems	3	3	0	0	5	-	C	6
ELK 312E	High Voltage Technique	3	3	0	0	5	-	C	6
DAN 301	Career Advising	1	0	2	0	1	-	C	6
	6th Sems.Elect. Course (ITB)	3				4	-	E	6
	6th Sems.Elect. Course (MT)	3				5	-	E	6

5th & 6th Semester Elective Courses



Course Code	Course Title	Credit	Theoretical	Tutorial	Lab.	ECTS
BLG 212E	Microprocessor Systems	3	3	0	0	6
ELK 313E	Power Transmission Lines	3	3	0	0	5
ELK 333E	Introduction to Nuclear Engineering	3	3	0	0	5

Course Code	Course Title	Credit	Theoretical	Tutorial	Lab.	ECTS
ELK 374E	Nuclear Energy and Nuclear Reactors	3	3	0	0	5
ELK 453E	Indust.Appl. of Power Electronics I	3	3	0	0	5
KON 322E	Industrial Automated Systems	3	3	0	0	5

Senior Year



7. Semester

Course Code	Course Title	Credit	Theoretical	Tutorial	Lab.	ECTS	Type	Compulsory/Elective	Semester
ELK 421E	Generation of Electrical Energy	3	3	0	0	5	-	C	7
ELK 431E	Electrical Machines Laboratory I	1	0	0	2	3	-	C	7
ELK 411E	High Voltage Laboratory	1.5	0	0	3	3	-	C	7
ELK 455E	Computer Networks for Power Systems	2.5	2	1	0	4	-	C	7
ELK 4901E	Electrical Engineering Design I	4	1	6	0	4	-	C	7
	7th Sems.Elect. Course I (MT)	3				5	-	E	7
	7th Sems.Elect. Course II (MT)	3				5	-	E	7
	7th Sems.Elect. Course III (MT)	3				5	-	E	7

8. Semester

Course Code	Course Title	Credit	Theoretical	Tutorial	Lab.	ECTS	Type	Compulsory/Elective	Semester
HUK 201	Labor Law	3	3	0	0	4	-	C	8
ELK 4902E	Electrical Engineering Design II	4	1	6	0	4.5	-	C	8
ELK 418E	Distribution of Electrical Energy	2.5	2	1	0	4	-	C	8
ELK 458E	Electrical Engineering Project	2	1	2	0	4	-	C	8
ELK 420E	Electric Distribution Automation Laboratory	1	0	0	2	3	-	C	8
ATA 102	History of Turkish Revolution II	2	2	0	0	2	-	C	8
	8th Sems.Elect. Course I (MT)	3				5	-	E	8
	8th Sems.Elect. Course II (MT)	3				5	-	E	8

7th Semester Elective Courses



Course Code	Course Title	Credit	Theoretical	Tutorial	Lab.	ECTS
ELK 334E	Design of Power Electronic Circuits	3	3	0	0	5
ELK 415E	Digital Protection and Signalling	3	3	0	0	5
ELK 423E	Special Electrical Machines	3	3	0	0	5
ELK 443E	Basics of Dynamics of Electrical Machines	3	3	0	0	5
ELK 463E	Overvoltages & Insulation Coordination	3	3	0	0	5
ELK 471E	Engineering and Project Management	3	3	0	0	5
ELK 493E	Illumination and Indoor Installation Laboratory	3	3	0	0	5

8th Semester Elective Courses



Course Code	Course Title	Credit	Theoretical	Tutorial	Lab.	ECTS
ELK 428E	Electric and Hybrid Vehicles	3	3	0	0	5
ELK 472E	Renewable Energy Systems	3	3	0	0	5
ELK 474E	Power System Control and Communication	3	3	0	0	5
ELK 488E	Electric Drive Systems	3	3	0	0	5
ELK 494E	Direct Energy Conversion	3	3	0	0	
ELK 496E	Power System Dynamics and Stability	3	3	0	0	5

Laboratories

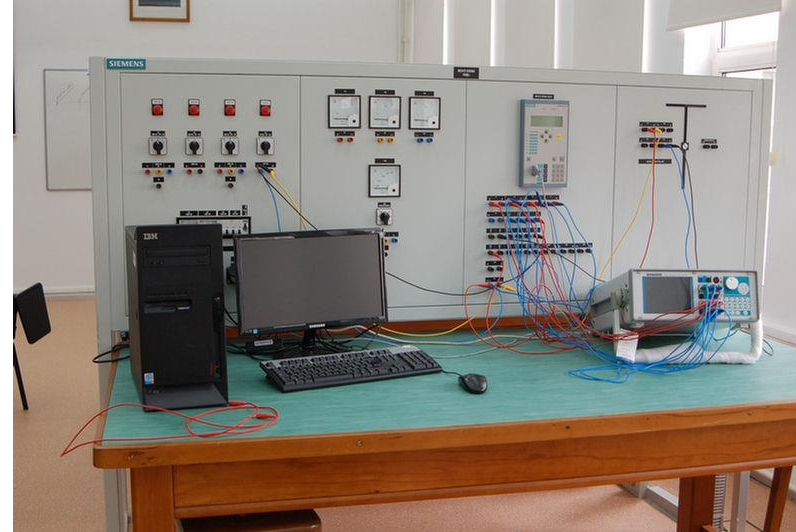
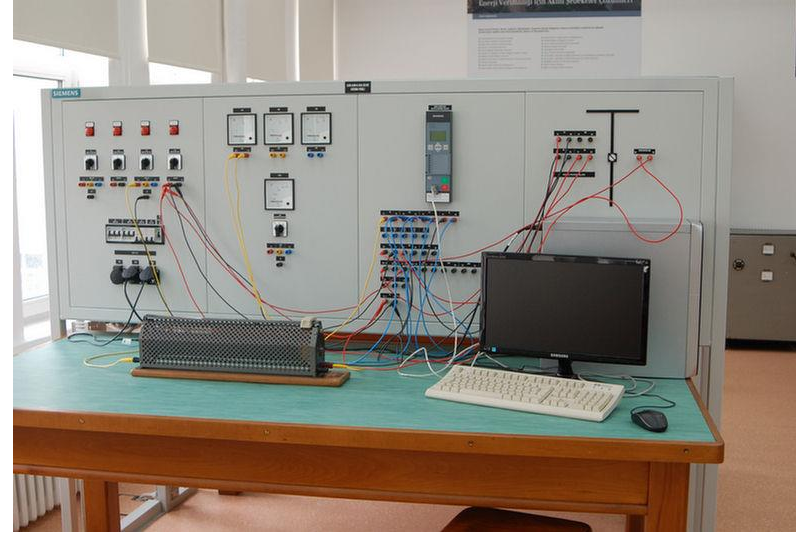


- Lighting Technologies Laboratory
- Electric Distribution Automation Laboratory
- Electric Power Systems Laboratory
- Electrical Machines Laboratory
- Power Electronics Laboratory
- High Voltage Laboratory

Lighting Technologies Laboratory



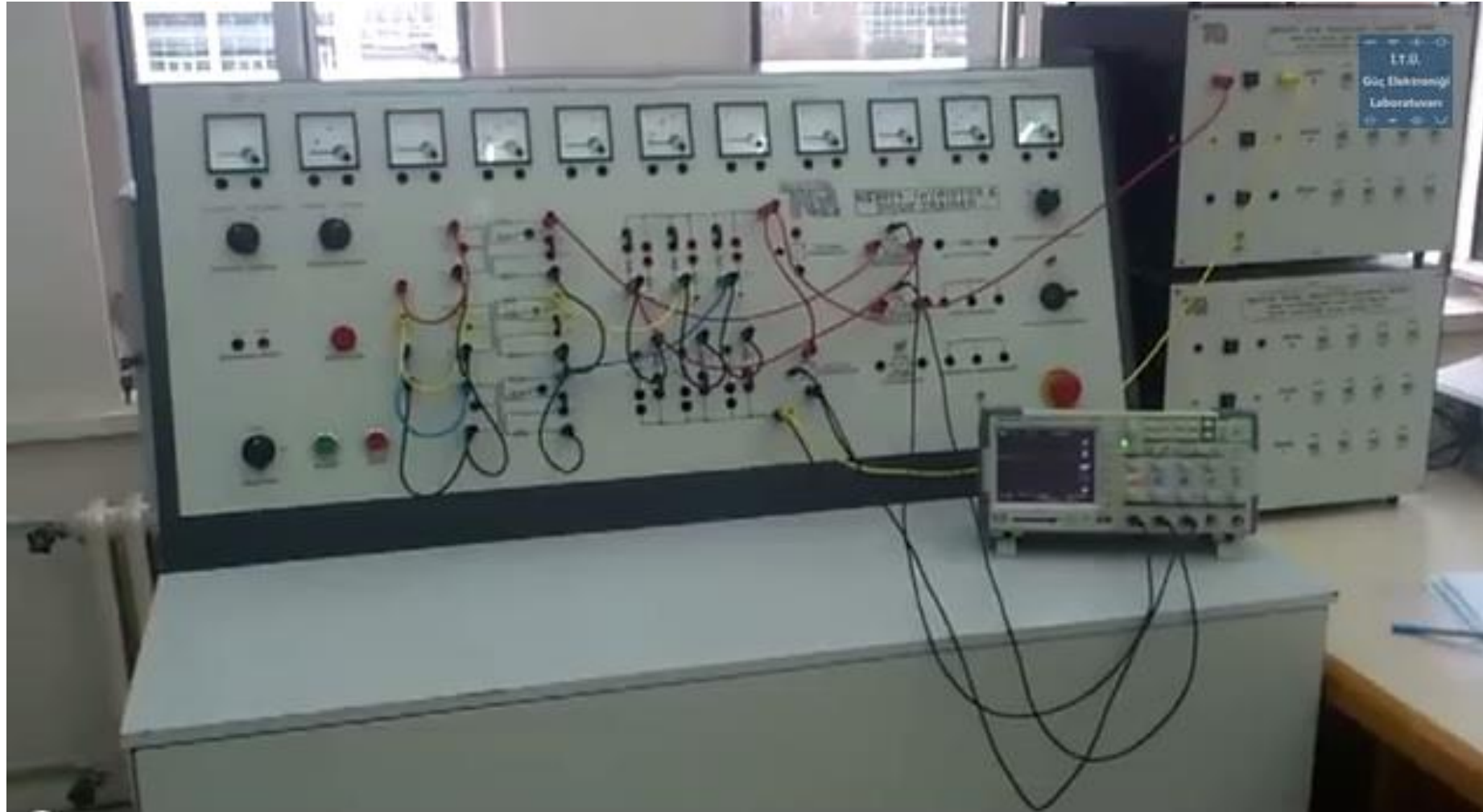
Electric Distribution and Automation Laboratory



Electrical Machines Laboratory



Power Electronics Laboratory



High Voltage Laboratories – Ayazaga and Gümüşsuyu Campuses



Research Laboratories



- Electrical Energy Systems Laboratory
- Intelligent Condition Monitoring & Diagnostics
- Cognitive Systems
- Smart Grids
- Photovoltaic Systems
- Computational Electromechanical Systems
- Super Conductivity
- Renewable Energy

Double Major Programs



- The quotas of double major programs are decided by the University Senate each year
- The student can apply for the double major program earliest at the beginning of the 3rd and latest at the beginning of the 5th semesters.
- The student must complete at least thirty-five credits at the end of the first year and at least 70 credits at the end of the second year in order to apply for the Double Major Program, must have successfully completed all the courses taken in the major undergraduate program until the semester applied.
- The student must have a GPA of at least 3.00 out of 4.00 at the time of application, and also be in the top 20% of all the students in the main program.
- Details regarding the double major programs can be found at:

<http://www.sis.itu.edu.tr/tr/cyy/>

Examples of Double Major Programs



DERS KODU	DERS ADI	Z/S	Kredi	Ders	Uyg	Lab
EHB 205	Lojik Tasarıma Giriş	Z	3	3	0	0
EHB 231	Elektronik I	Z	3	3	0	0
EHB 206	İşaret İşleme ve Lineer Sist.	Z	3	3	0	0
EHB 262	Elektronik II	Z	3	3	0	0
EHB 311	Elektroniğe Giriş Lab.	Z	1	0	0	2
EHB 313	Elektromagnetik Dalgalar	Z	3	3	0	0
EHB 315	Sayısal İşaret İşleme	Z	3	3	0	0
EHB 335	Analog Elektronik Devreleri	Z	3	3	0	0
EHB 351	Analog Haberleşme	Z	3	3	0	0
EHB 322	Sayısal Elektronik Devreleri	Z	3	3	0	0
EHB 352	Sayısal Haberleşme	Z	3	3	0	0
EHB 362	Mikrodalga Mühendisliği	Z	3	3	0	0
	7.yy Seçime Bağlı Ders I (MT)	S	3			
	7.yy Seçime Bağlı Ders II (MT)	S	3			
	8.yy Seçime Bağlı Ders I (MT)	S	3			
EHB 4901	Elektronik & Hab. Müh. Tas .I	Z	4	1	6	0
EHB 4902	Elektronik & Hab. Müh. Tas .II	Z	4	1	6	0
TOPLAM KREDİ			51			

Examples of Double Major Programs



DERS KODU	DERS ADI	Z/S	Kredi	Ders	Lab/Uyg
BLG 112E	Discrete Mathematics	Z	3	3	0
BLG 223E	Data Structures	Z	3.5	3	1
BLG 202E	Numerical Methods in CE	Z	3	3	0
BLG 252E	Object Oriented Programming	Z	3	3	0
BLG 222E	Computer Organization	Z	3	3	0
BLG 212E	Microprocessor Systems	Z	3	3	0
BLG 335E	Analysis of Algorithms I	Z	3	3	0
BLG 336E	Analysis of Algorithms II	Z	3	3	0
BLG 242E	Logic Circuits Laboratory	Z	1	0	2
BLG 311E	Formal Languages and Automata	Z	3	3	0
BLG 317E	Database Systems	Z	3	3	0
BLG 351E	Microcomputer Lab.	Z	1	0	2
BLG 312E	Computer Operating Systems	Z	3	3	0
BLG 322E	Computer Architecture	Z	3	3	0
BLG 411E	Software Engineering	Z	3	3	0
BLG 4901E	Computer Engineering Design I	Z	3	1	4
BLG 4902E	Computer Engineering Design II	Z	5	1	8
	Seçime Bağlı Ders(MT)/Elective Course (MT) I	S	2	2	0
	Seçime Bağlı Ders(MT)/Elective Course (MT) II	S	2	2	0
TOPLAM KREDİ			53,5		

Minor Programs



- The minor program allows students to take courses from another Bachelor's program they are interested in.
- A certificate is awarded to students who successfully complete their minor education.
- The student must have an overall GPA of 2.50 to be able to apply to a minor program.
- A list of all minor programs can be found at:

<http://www.sis.itu.edu.tr/tr/yandalprg/>

Example Minor Program



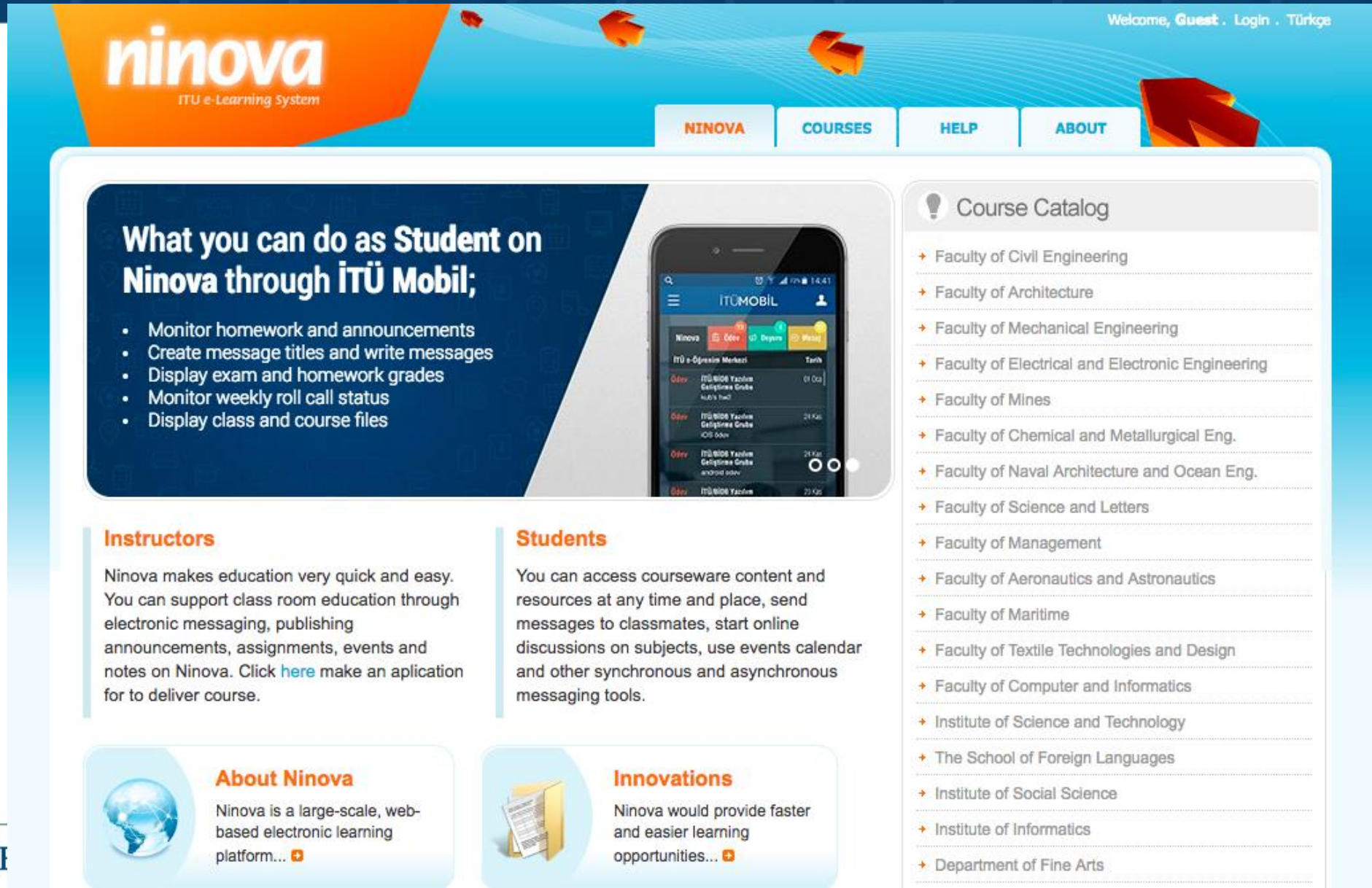
Ders Kodu	Ders Adı	Kredi
ECN 201E	Intermediate Microeconomics	3,5
ECN 202E	Intermediate Macroeconomics	3,5
ECN 301E	Econometrics I	3,5
ECN 307E	Game Theory	3
ECN 311E	International Trade	3
ECN 302E	Econometrics II	3,5
ECN 309E	Money, Banking&Financial Mark.	3

Transfer Between ITU Programs



- The quotas for internal transfer is announced by the senate every year.
- Students may apply earliest at the beginning of the 3rd (having completed at least 35 credits) and latest at the beginning of the 5th semesters (having completed at least 70 credits).
- For the 3rd semester, the student must complete all the courses in the first two semesters successfully and have a GPA of 2.50
- For the 5th semester, the student must complete all the courses in the first two semesters and complete a total credit of 70 successfully and have a GPA of 2.60.
- For all rules regarding double major, minor and internal transfers please refer to:

<http://www.sis.itu.edu.tr/tr/yonetmelik/YatayCapYandal.html>




Welcome, Guest · Login · Türkçe

ninova
ITU e-Learning System

NINOVA COURSES HELP ABOUT

What you can do as Student on Ninova through İTÜ Mobil;

- Monitor homework and announcements
- Create message titles and write messages
- Display exam and homework grades
- Monitor weekly roll call status
- Display class and course files



Course Catalog

- Faculty of Civil Engineering
- Faculty of Architecture
- Faculty of Mechanical Engineering
- Faculty of Electrical and Electronic Engineering
- Faculty of Mines
- Faculty of Chemical and Metallurgical Eng.
- Faculty of Naval Architecture and Ocean Eng.
- Faculty of Science and Letters
- Faculty of Management
- Faculty of Aeronautics and Astronautics
- Faculty of Maritime
- Faculty of Textile Technologies and Design
- Faculty of Computer and Informatics
- Institute of Science and Technology
- The School of Foreign Languages
- Institute of Social Science
- Institute of Informatics
- Department of Fine Arts

Instructors

Ninova makes education very quick and easy. You can support class room education through electronic messaging, publishing announcements, assignments, events and notes on Ninova. Click [here](#) make an application to deliver course.

Students

You can access courseware content and resources at any time and place, send messages to classmates, start online discussions on subjects, use events calendar and other synchronous and asynchronous messaging tools.

About Ninova

Ninova is a large-scale, web-based electronic learning platform... +

Innovations

Ninova would provide faster and easier learning opportunities... +

- Login
- About System
- Academic Calendar
- Undergraduate Level Curriculum
- Prerequisites
- Course Contents
- Class Schedule
- Final Exam Schedule
- Erasmus/International
- Regulations and Senate Principles
- Double Major, Minor, Transfer
- Tuition Fees
- Diploma
- Military Obligations
- Foreign Students



■ Program Information ■ Dean of Students ■ Administration and Staff ■ Help ■ Türkçe

ADMISSION APPLICATION

- ▶ 7143 Sayılı Af Kanunu Hakkında Duyuru

VERY IMPORTANT AND URGENT ANNOUNCEMENTS

- ▶ İTÜ İçi İç Yatay Geçiş , Kurumlararası Yatay Geçiş, Merkezi Yerleştirme Puanı ile Kesin Kayıt Yapan Öğrencilerin Ders Kayıt İşlem Süreci
- ▶ 7143 Nolu Af İle İntibak Yapılan Lisansüstü Öğrenciler Hakkında
- ▶ İngilizce Yeterlilik Sınavında Başarılı Olan ve İlk Defa Ders Alacak Öğrencilerin WEB'den Ders Atamaları
- ▶ Türk Musikisi Devlet Konservatuvarı 2018-2019 Eğitim Öğretim Yılı Yedekten Asile Geçen Adaylar
- ▶ Yurt Dışı Adayların Lisans Başvuru Sonuçlarına Göre Yedekten Asile Geçen Adaylar ve Kayıt İşlemleri
- ▶ 2018-2019 Güz Dönemi Kapatılan Lisans Derslerin Listesi

- ITU Library System aims to provide the information needed as an integral part of the education, training and research activities carried out in ITU, using contemporary facilities and systems, in a fast, effective and efficient manner.
- According to the data of 2019, ITU Libraries have a rich information-document presence with 461,628 e-books and 74,432 e-journals, 6,000 rare works, 5,672 maps, 215 databases, 1,012,207 publications and 2,112,000 electronic theses.
- Mustafa Inan Library is the main library which is normally open 24/7 (different working hours may apply during the pandemic) and there are also 7 branch libraries:
 - Mechanical Engineering Faculty Ratip Berker Library
 - Centre for Advanced Studies in Music (MIAM) Library
 - Faculty of Architecture Professor Doğan Kuban Library
 - Maritime Faculty Library
 - Management Faculty Library
 - School of Foreign Languages Library
 - Turkish Music State Conservatory Ercümen Berker & Prof. Ş. Şehvar Beşiroğlu Library

- Istanbul Technical University offers comfortable, peaceful, contemporary, high-standard dormitories for students from outside the province.
- Our dormitories offer services in Ayazağa, Gümüşsuyu and Tuzla campuses with a bed capacity of 4,706 people.
- Student rooms consist of suites, single, double and triple beds.
- Rooms and public areas are fully equipped with modern furnishings and uninterrupted telephone and internet connection can be provided in the rooms.
- Each building has TV rooms, study halls and common seating areas.
- There are kitchens, laundry and ironing rooms for students to use. 24-hour hot water, spring water for drinking, security and cleaning services are provided.

Our university offers 5 types of scholarships:

- **Achievement Scholarship:** Given to students who have achieved a high level of success as specified in the ÖSYM guide and enrolled in their undergraduate program after the university exam held by ÖSYM selecting ITU as their first choice.
- **Need Based Scholarship:** Given to students who are economically in need. These scholarships are covered by ITU Foundations, ITU Alumni and Associations and other foundations / institutions / organizations.
- **Food Scholarship:** Students benefit from 1 free meal (lunch) every day at the cafeterias of our university.
- **Sports Scholarship:** Scholarship awarded to students participating in individual or team sports in the national level and based on their university entrance scores.
- **Accomodation Scholarship:** Given to students to stay in university dormitories for free or at a discount based on need, university entrance score and academic success.
- You may obtain more information about the scholarships from the Faculty Student Affairs Office

- İTÜ GİNOVA - Girişimcilik ve İnovasyon Merkezi – Center for Entrepreneurship and Innovation – www.ginova.itu.edu.tr
- İTÜ ARI TEKNOKENT - <https://www.ariteknokent.com.tr/en>
 - **İTÜ Çekirdek** Erken Aşama Girişimcilik Merkezi - Early-Stage Incubation Center - İTÜ Çekirdek Early-Stage Incubation Center is the right address for all entrepreneurs and start-ups that have technological and innovative business ideas, and believe their ideas can be converted to innovative and commercial outputs!
 - **İTÜ Magnet** İleri Aşama Girişimcilik Merkezi - ITU MAGNET provides services and synergy environment to help late-stage entrepreneurs and start-ups who managed to turn their ideas into products grow.
 - **Innogate** Uluslararası Girişim Hazırlandırma Programı - INNOGATE provides products to readily-standing companies through a versatile program including access to international connections, getting into market, business modeling and strategy development opportunities together with training, mentorship and counseling benefits.
 - **İTÜNOVA TTO** - ITUNOVA Technology Transfer Office, the power that brings the Academy and the Industry together, is the bridge between academic projects developed in ITU and the industry.

Foreign Languages



- The university offers German, French, Spanish, Italian, Russian and Japanese courses under the School of Foreign Languages.

CRN	Ders Kodu	Ders Adı	Öğretim Üyesi	Bina	Gün	Saat	Derslik	Kontenjan	Yazılan	Reservasyon Böl./Kont./Yaz.	Dersi Alabilen Programlar	Ders Önşartları	Sınıf Önşartı
CRN	Course Code	Course Title	Instructor	Building	Day	Time	Room	Capacity	Enrolled	Reservation Maj./Cap./Enrl.	Major Restriction	Prerequisites	Class Rest.
10343	ALM 101	Almanca I	İnanç Bakkalbaşı	----	Pazartesi	0830/1229	----	25	25	Yok/None	Tüm Lisans ve Lisansüstü Programlar	Yok/None	Yok/None
10344	ALM 101	Almanca I	İnanç Bakkalbaşı	----	Salı	0830/1229	----	25	25	Yok/None	Tüm Lisans ve Lisansüstü Programlar	Yok/None	Yok/None
10345	ALM 102	Almanca II	İnanç Bakkalbaşı	----	Perşembe	0830/1229	----	25	25	Yok/None	Tüm Lisans ve Lisansüstü Programlar	Yok/None	Yok/None
10347	ALM 102	Almanca II	İnanç Bakkalbaşı	----	Cuma	0830/1229	----	25	25	Yok/None	Tüm Lisans ve Lisansüstü Programlar	Yok/None	Yok/None
10350	ALM 201	Almanca III	Vanessa Zogopoulou	----	Salı	1330/1729	----	25	25	Yok/None	Tüm Lisans ve Lisansüstü Programlar	Yok/None	Yok/None
10349	ALM 202	Almanca IV	Vanessa Zogopoulou	----	Pazartesi	1330/1729	----	25	25	Yok/None	Tüm Lisans ve Lisansüstü Programlar	Yok/None	Yok/None
10354	ALM 301	Almanca V	Vanessa Zogopoulou	----	Cuma	1330/1729	----	25	25	Yok/None	Tüm Lisans ve Lisansüstü Programlar	Yok/None	Yok/None
10352	ALM 302	Almanca VI	Vanessa Zogopoulou	----	Perşembe	1330/1729	----	25	25	Yok/None	Tüm Lisans ve Lisansüstü Programlar	Yok/None	Yok/None
10346	ALM 401	Almanca VII	Vanessa Zogopoulou	----	Cuma	0830/1229	----	20	12	Yok/None	Tüm Lisans ve Lisansüstü Programlar	Yok/None	Yok/None

ITU Student Clubs - itukuluplerbirligi.com



Anasayfa

Hakkımızda

Ekibimiz

Etkinliklerimiz

Kulüplerimiz

Duyurular

Dökümanlar

İletişim



Back to
School
ONLINE

16-17-18
Ekim



İTÜ Kulüpler Birliği

Detaylar için
itukuluplerbirligi.com

Türkiye'deki en büyük ve en güçlü sosyal öğrenci yapılanmasıdır!

ITU Solar Car Team - www.itugae.com



ITU Rover Team – rover.itu.edu.tr



ANA TAKIM ▾

ROVER

SPONSORLAR

GEÇMİŞ ▾

İletişim





Internship and Career Possibilities



SIEMENS

arçelik

TURKISH AIRLINES



Schneider Electric



ABB

vodafone

EPDK
ENERJİ PİYASASI
DÜZENLEME KURUMU



Mercedes-Benz

ALSTOM

VESTEL

roketsan



BOSCH aselsan



T.C. ENERJİ VE TABİİ
KAYNAKLAR BAKANLIĞI

PHILIPS



FORD OTOSAN



Graduate Network – itumezun.org



İSTANBUL TEKNİK
ÜNİVERSİTESİ

Giriş yap

Profesyonel Ağ ile
Kariyerinizi İleri
Taşıyın

ŞİMDİ BAŞLA

Support

ITU Career Center – ikm.itu.edu.tr



Hakkımızda / İletişim

0 (212) 285 39 01

ikm@itu.edu.tr



Hakkımızda

İTÜ Kariyer Zirvesi

İş ve Staj

İş Bulma Becerileri

Arama..

Ara

<https://itukariyerzirvesi.itu.edu.tr/>

Daha iyi bir
Kariyer için

İTÜ



Linked in . ITU Career Center

[itukariyer](#)

[İTÜ Kariyer Merkezi](#)

[YouTube](#) İKM TV